

# Users' Guide

---

## **OZUPADKEY and Applications**

**Ozupad**

Nov., 2009

# Users' Guide

## OZUPADKEY and Applications

You may choose to download and install optional software application OZUPADKEY.

You can download the latest OZUPADKEY at DOWNLOAD tag at <http://www.ozupad.com>

OZUPADKEY is a software template that used to assign keys to OZUPAD buttons instead of using the keyboard.

The OZUPADKEY installed in your computer will automatically set up the applications as below

- Google® Earth
- Google® Maps
- Google® Flight Simulation
- Yahoo® Maps
- Microsoft® Media Center
- Microsoft® Media Player 11
- Space Invaders, Tetris (Games)

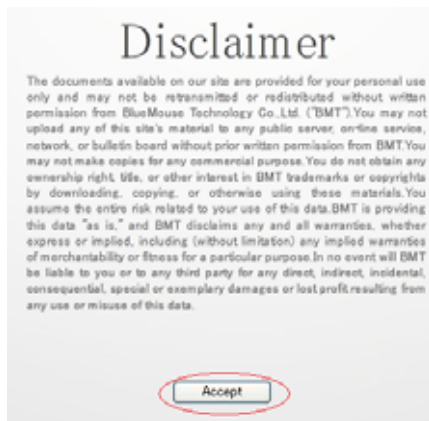
.....many other applications will be added

➡ When using OzupadKey, the LED color on OZUPAD (3WAY) has to be switched to **Purple** at Joystick mode. After installing OzupadKey in your computer, each button of OZUPAD (3WAY) is assigned automatically for the application respectively. "Auto" means default setting.

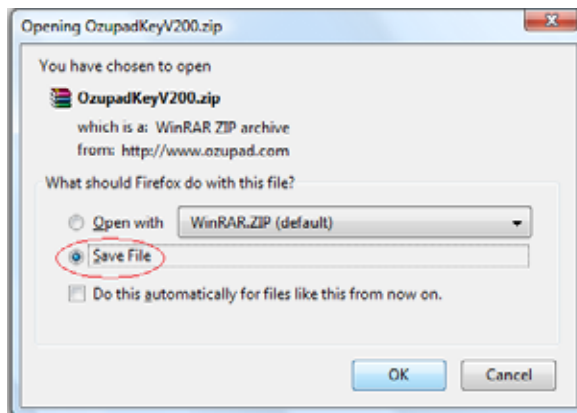
### (A)Download OzupadKey

(1)Click "Download" in the webpage [www.ozupad.com](http://www.ozupad.com)

(2)Click "Download OZUPADKEY.msi"



Click "Accept"



Check "Save File", then click "OK"



Double click "OzupadKey.zip"



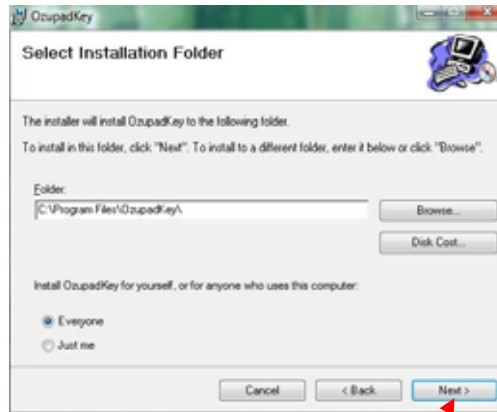
Double click "OzupadKey.msi"

## (B) Install OzupadKey

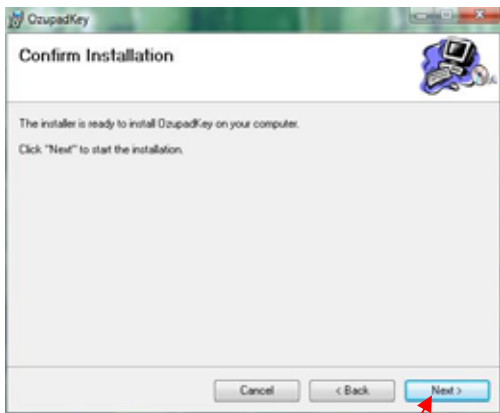
(1)



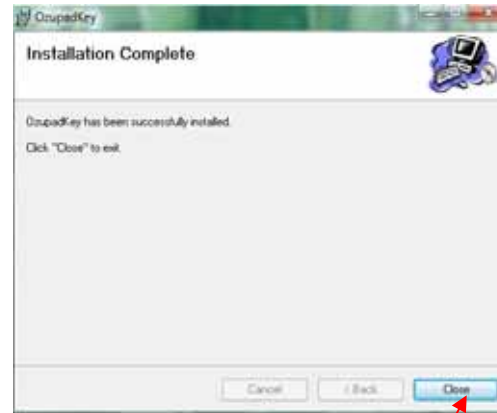
(2)



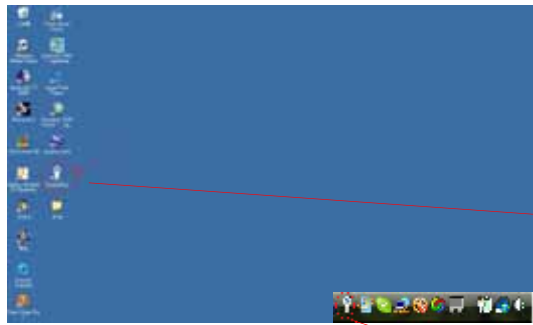
(3)



(4)



The OzupadKey has been installed in your computer



After the OzupadKey completely installed, the icon will be shown in the desktop

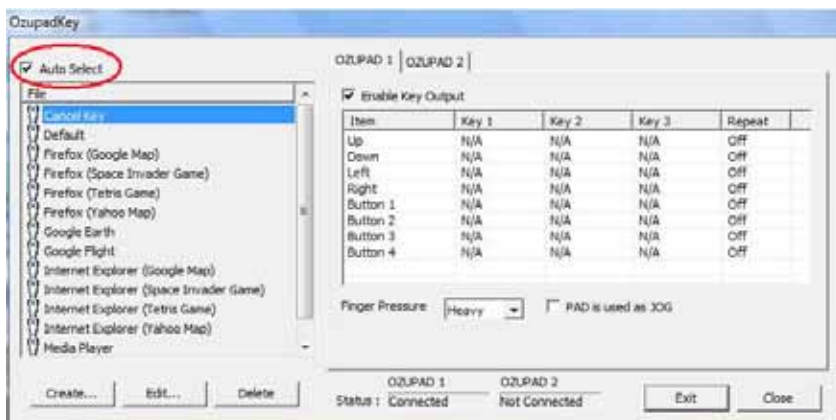


Ozupad icon also appears in the task bar

Click the icon in the task bar, a list of applications will be



Click "Open OzupadKey" to activate OzupadKey and the OzupadKey table will also appear.

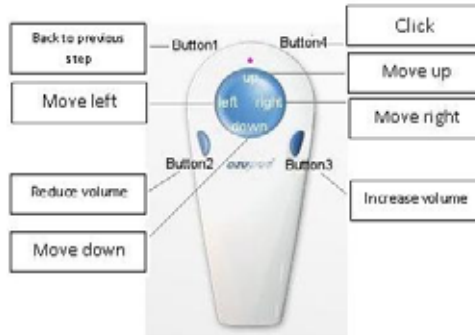


- Auto Select** When the "Auto Select" is checked, the keys assignments are set automatically for the applications:
  - Google® Earth, Google® Maps, Google® Flight Simulation
  - Yahoo® Maps
  - Microsoft® Media Center, Microsoft® Media Player 11
  - Space Invaders, Tetris (Games)

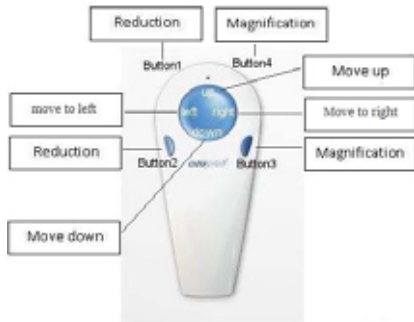
## Functional buttons for applications



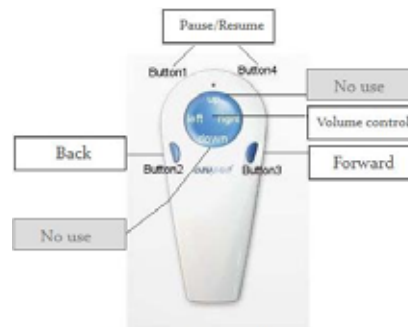
Key Assignment for Google Earth



Key Assignment for Media Center



Key Assignment for Google Maps and Yahoo Maps

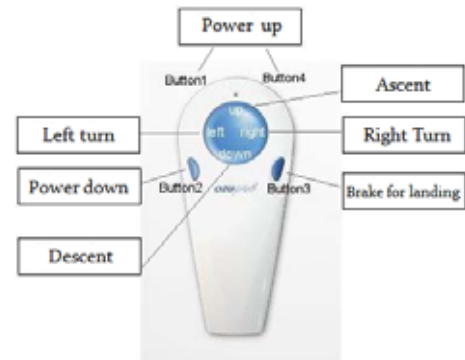
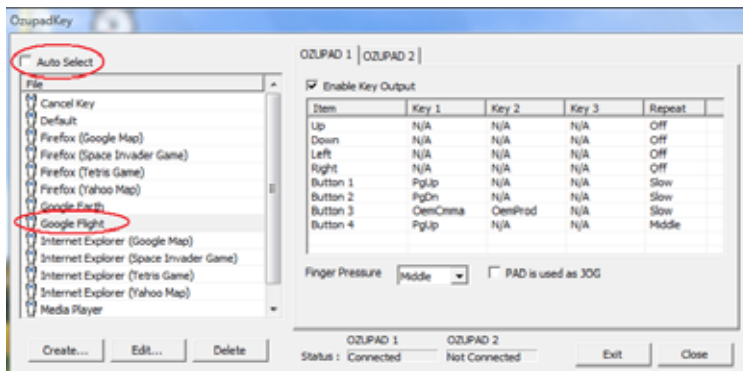


Key Assignment for Windows Media Player 11

In the Windows Media Player 11, audio volume is controlled by the Vector pad. To increase the volume move your thumb around the Vector pad in a clockwise direction, counterclockwise will reduce the volume.



However, when playing Google® Flight Simulation, you need to un-check “Auto Select”  Auto Select and check “Google Flight” for the application. Click “Close” to complete the set-up.



Keys assignment for Google Flight

### (C) Customization - Assign your own keys


- OZUPADKEY allows you to assign custom key settings for your chosen applications.
- You can connect one or two OZUPAD to your PC at the same time. You may also use one regular mouse and one Ozupad in a computer at the same time.
- OZUPADKEY is the software that you can assign keys on the keyboard of your PC to the buttons on the OZUPAD after switching the operation of the OZUPAD to Joystick mode.
- OZUPAD with OZUPADKEY can emulate any key on the keyboard.

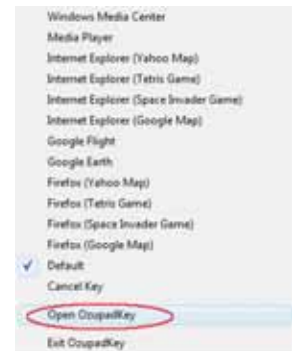
➤ Please press the switch button on the rear of OZUPAD to change the LED (in the front) color to purple that showing the operation has been changed to Joystick mode.

#### ❖ Example -- Play PC games (You can make your own keys assignment)

You can play games with one or two OZUPAD that connected to your PC at the same time. OZUPAD with OZUPADKEY can emulate any key on the keyboard. Almost all PC games could be played by using OZUPAD with OZUPADKEY.

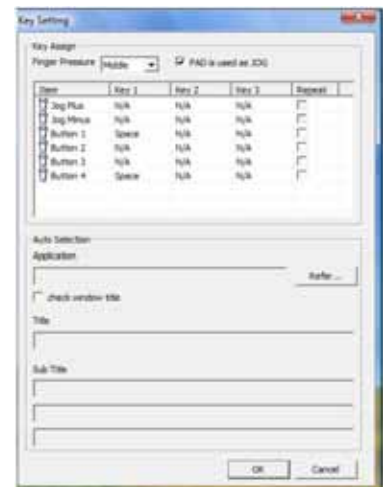
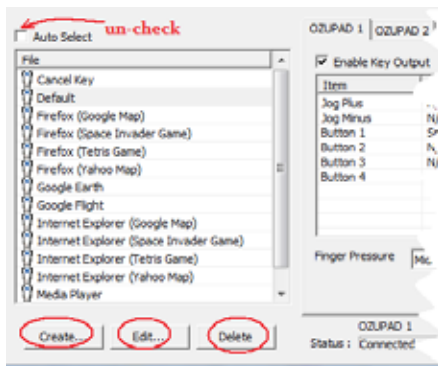
### 1. Custom key setting:

Open OZUPADKEY by click the icon  in the task bar, then click "Open OZUPADKEY" in the pop-up menu, the following table "OzupadKey" will appear.



- By un-check the "Auto select", you will be able to start to assign your own key setting.
- You can create a new key setting for an application of your choice by clicking "Create".

Click "Edit", you can now assign your own key settings by editing the "Key Setting" table, double click the item that to be edited and start to assign key in your keyboard to a button on the OZUPAD. The maximum number of key settings is 256. Click "Delete" button will delete a selected key setting.



**You may choose to connect either one or two OZUPAD to your PC.**

**In the case if you will like to have two OZUPAD connected to your PC at the same time --**

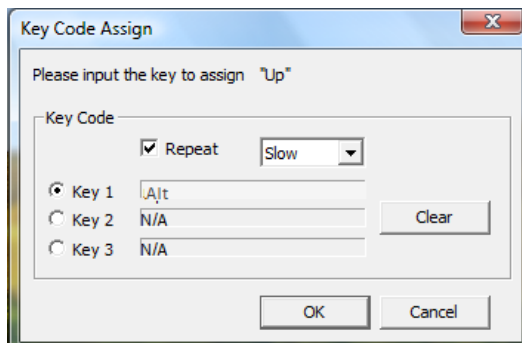
When you have completely assigned the key setting of the first OZUPAD (OZUPAD 1), OZUPADKEY will prompt to ask whether you want to apply same setting on the 2nd OZUPAD (OZUPAD 2) with same setting.

If you choose “no”, then you can assign different key setting on the 2nd OZUPAD (OZUPAD 2). When you connect the first OZUPAD to USB port of your PC, the status will be changed to OZUPAD 1 connected and if you connect 2nd OZUPAD, OZUPAD 2 status also will be changed to “Connected”.

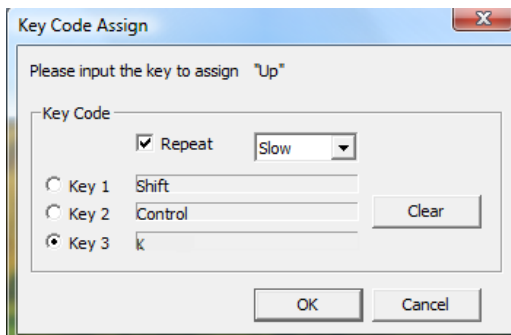
- When you chose an item in the item column and double click it. (also, you can click the item in the “Key Setting” table, see as above)



The table “Key Code Assign” will be pop-up. You’ll be able to assign one or combination of keys (up to 3) of any key on keyboard to an OZUPAD button.

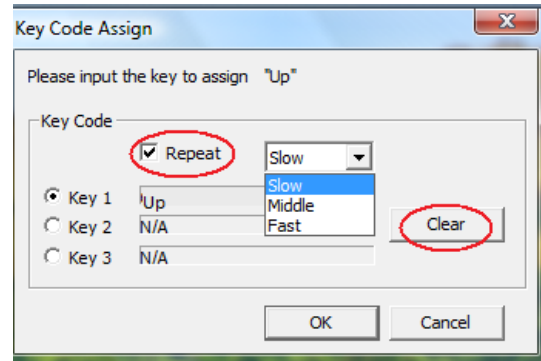


Double click the OZUPAD button you want to edit, for example the “Up” button, to assign “Alt” key to the “Up” button by pressing “ALT” in your keyboard, the table shown on the right will appear. The “Up” button here then has the same effect as pressing “Alt” on the keyboard.

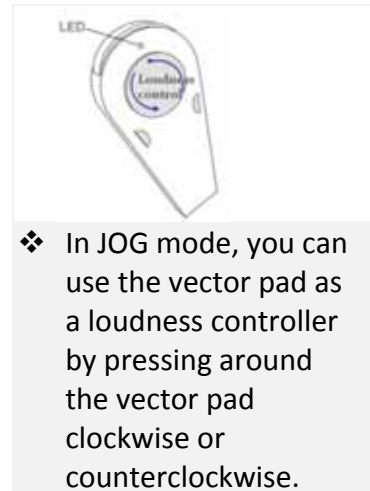
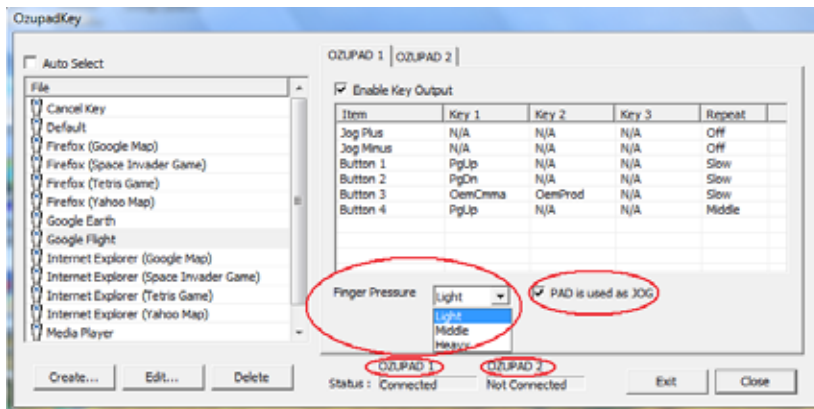




You can also set more complex key assignments, for example, you can now assign up to 3 keys to the “Up” button if you set Key 1 to “Shift”, Key 2 to “Ctrl” and Key 3 to “K” pressing the Up button has the same effect as pressing “Shift + Ctrl + K” on the keyboard.

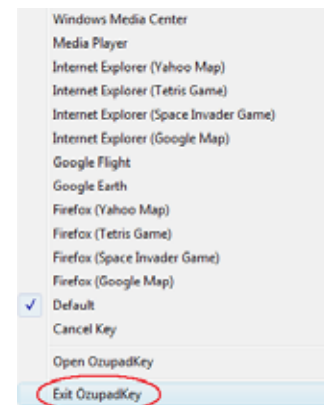
- By pressing “clear“, the key setting will be cleared. It means Not Assigned (N/A).
- “Repeat” is for when you press the assigned button, automatically the key signal will be repeated continuously and you can set the repeat cycle 3 levels, , the speed of the “repeat” can be set to slow, medium or fast.



- You can set the vector pad sensitivity among Light/Middle/Heavy in the box of “Finger Pressure”. This allows you to choose how hard to press vector pad before the “press” is accepted by OZUPADKEY.
- **JOG mode:** if you check the “PAD is used as JOG“, the vector pad (Up/Down/Left/Right) acts as a JOG controller.



- Clicking “Close” will close the “OzupadKey” main screen, however the OzupadKey is still running in your PC.
- If you want to stop to use OZUPADKEY, press “Exit OZUPADKEY” in the pop-up menu from the icon in the task bar or simply click the button “Exit” in the table as above.  
The icon  will be removed from the task bar. However, the “OzupadKey”  icon will still appear in your Windows desktop.



Please press “OK” once you have set up the key assignment to a button on your “OZUPAD”. Repeat this process for all the buttons on the “OZUPAD” you want to setup.

## Key Assignment and Buttons Location

### Buttons Location

JOG mode

### Key Assignment

When vector pad is not used for JOG, you can have up to 8 assignments

Item	Key 1	Key 2	Key 3	Repeat
Up	N/A	N/A	N/A	Off
Down	N/A	N/A	N/A	Off
Left	N/A	N/A	N/A	Off
Right	N/A	N/A	N/A	Off
Button 1	N/A	N/A	N/A	Off
Button 2	N/A	N/A	N/A	Off
Button 3	N/A	N/A	N/A	Off
Button 4	N/A	N/A	N/A	Off

When vector pad is used for JOG, you can have up to 6 assignments

Item	Key 1	Key 2	Key 3	Repeat
Jog Plus	N/A	N/A	N/A	Off
Jog Minus	N/A	N/A	N/A	Off
Button 1	N/A	N/A	N/A	Off
Button 2	N/A	N/A	N/A	Off
Button 3	N/A	N/A	N/A	Off
Button 4	N/A	N/A	N/A	Off

## 2. Combination of Joystick and Mouse

As mentioned earlier, two OZUPAD can be connected to your PC, the two “OZPUAD” (OZUPAD 1 and OZUPAD 2) can be used in various modes to suit a wide variety of applications.

**Case 1** – both “OZUPAD” are set as key assigning mode. You can assign any key to a button of these two OZUPAD, Please make sure you have the “Enable Key Output” boxes for both OZUPAD 1 and OZUPAD 2 checked.

**Case 2** – OZUPAD 1 is used as a joystick, OZUPAD 2 for key assignment  
 Uncheck the “Enable Key Output box” for OZUPAD 1 and check the box in the OZUPAD 2.  
 Ensure that OZUPAD 1 is in Joystick mode (LED color: purple).

**Case 3** - OZUPAD 1 is used as a mouse, OZUPAD 2 for key assignment  
 Uncheck the Enable Key Output box for OZUPAD 1 and check the box in the OZUPAD 2.  
 Ensure that OZUPAD 1 is in Air-space mouse (pointer) mode (LED color: blue).

### Where to buy

Please go to [www.TekiStore.com](http://www.TekiStore.com) , if will like to order OZUPAD and OZUPAD 3WAY.

### Copyright

The layout of OZUPADKEY, the design and the copyright concerning the structure belong to BlueMouse technology Ltd.  
 The copyright of software and trademark belong to the author or the company of software applications and company as appropriate.